

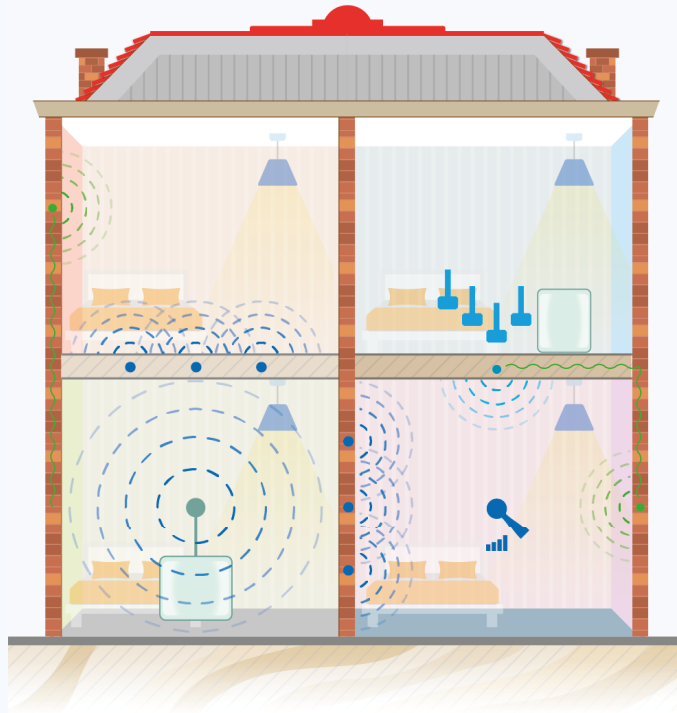
# SOUND TESTING

## FLATS IN A BLOCK

### PARTY WALLS & FLOORS

J O S T E C

BUILDING REGULATIONS COMPLIANCE SERVICES



#### AIRBORNE TEST

A loud-speaker is placed in the source room and a microphone in the receive room.

The microphone picks up sound that travels through the party wall or floor. Calculating how much sound has been lost.

#### AIRBORNE SOUND

e.g. Loud Stereo/Music/TV

#### IMPACT TEST

A tapping machine uses metal hammers to tap on the floor in the source room and the microphone picks up sound that travels through the party floor.

#### IMPACT SOUND

e.g. Heavy footsteps/Vibration of washing machine on floor

#### FLANKING SOUND

The tests will also highlight any flanking issues that occur.

Transference of either type of sound, bypassing partitioning walls or floors via doors or cavity walls.

#### ADDRESS

Suite 107  
Moda Business Centre  
Stirling Way, WD6 2BW

#### CONTACT

Tel: 01923 518 923  
E-mail: [info@jostec.co.uk](mailto:info@jostec.co.uk)  
Web: [www.jostec.co.uk](http://www.jostec.co.uk)